

REDBACK

STORAGE SYSTEMS

WORKBENCHES, DRAWERS, CABINETS & SHELVES

Australian Designed and Owned.



**Redback Unit 13 with overhead cabinets
Tools not included**

For your nearest distributor phone: 1300 788 628

www.redbackstoragesystems.com.au

Design your own workspace on our web page...

What is REDBACK ?

Redback units are assembled from a small number of interchangeable steel components. With these components a huge number of different units can be designed to suit your requirements in your workshop, garage, office or industrial premises. The units are free standing and do not need to be bolted to the floor or wall.

All components, apart from the laminated timber workbench tops are made from powder coated steel. Each shelf will support 150kg of evenly spread weight. The cabinets, drawer units and shelves all fit into the recessed beams which make assembly simple and quick. Two different bay widths will allow you to design a unit to fit your available space.

End Frame – Standard and Modified (H2000mm D500mm)



The welded steel end frames have two rows of slots. These are used to connect the support beams and attach the tool display. Also available are modified end frames which allow workbenches to be extended over more than one bay.

Support Beam – Short (W925mm) and Long (W1850mm)

Each support beam has welded connectors each end that lock on to the vertical end frames and are adjustable in 25mm increments. The beams come in two lengths that determine the length of each bay and are recessed to hold drawer units, cabinets, shelves and workbench tops.



Shelf (W925mm D450mm)

The steel shelves sit in the support beam recess, one in a narrow bay and two in a wide bay.

Workbench Top – Short (W925mm D600mm) and Long (W1850mm D600mm)

The workbench tops are made from laminated timber and are available in two lengths. The tops bolt to two support beams which can be fitted at a height to suit the user. A galvanized or stainless steel slip-on cover is also available.

Four Drawer unit (H300mm W900mm D450mm)

These units also sit in the support beam recess. They are lockable, have rubber drawer mats and are available in red or blue.



Maxi-Drawer (H450mm W900mm D450mm)



Maxi-drawers are made to hold the big tools, with double roller bearings and a bracket for stability. They sit in the support beam recess and are available in red or blue.

Big-As Cabinet (H1830mm W900mm D450mm)

The Big-as cabinets also sit in the support beam recess. They have three adjustable shelves, are lockable and available in red or blue.



900mm Cabinet (H900mm W900mm D450mm)

The 900mm steel cabinets sit in the support beam recess. They have two adjustable shelves, are lockable and available in red or blue.

Tool Display – Short (W925mm) and Long (W1850mm)

The tool displays are made from 1.2mm steel and are available in two lengths. Each panel has welded connectors each end that lock on to the vertical end frames.



Overhead Cabinet (H450mm W900mm D240mm)

The overhead cabinets have twin gas struts to support the door, one adjustable shelf and are available in red or blue. Brackets to hook over the top beam are provided and the unit is then screwed to the support beam.





REDBACK UNIT 1

Four shelf storage unit. Each shelf is engineered to hold 150kg.

Dimensions:

Height: 2 metre
Width: 990mm
Depth: 500mm

Parts List:

2 x End Frames
8 x Short Beams
4 x Shelves



REDBACK UNIT 2

Four shelf storage unit. Each shelf level (consisting of two shelves) is engineered to hold 300kg.

Dimensions:

Height: 2 metre
Width: 1920mm
Depth: 500mm

Parts List:

2 x End Frames
8 x Long Beams
8 x Shelves



REDBACK UNIT 3

Lockable 900mm cabinet with two adjustable shelves, and two lower storage shelves each engineered to hold 150kg.

Dimensions:

Height: 2 metre
Width: 990mm
Depth: 500mm

Parts List:

2 x End Frames
6 x Short Beams
1 x 900mm Cabinet
2 x Shelves



REDBACK UNIT 4

Lockable 900mm cabinet with two adjustable shelves, four drawer tool storage unit and one lower storage shelf engineered to hold 150kg.

Dimensions:

Height: 2 metre
Width: 990mm
Depth: 500mm

Parts List:

2 x End Frames
6 x Short Beams
1 x 900mm Cabinet
1 x Four Drawer unit
1 x Shelf



REDBACK UNIT 6A

This unit has a workbench that extends over two bays, one four drawer tool storage unit and an overhead cabinet.

Dimensions:

Height: 2 metre
Width: 2880mm
End Frame Depth: 500mm
Workbench Depth: 600mm

Parts List:

1 x End Frames
2 x Modified End Frame
6 x Long Beams
8 x Short Beams
1 x Long Tool Display (4 slats)
1 x Short Tool Display (2 slats)
1 x Long Workbench Top
1 x Short Workbench Top
1 x Overhead Cabinet
1 x Four Drawer unit
5 x Shelves
25 x Hooks





REDBACK WORKBENCHES

REDBACK UNIT 5A

This unit has two four drawer lockable tool storage units, workbench, tool display with 25 hooks and one adjustable shelf engineered to hold 300 kg.

Dimensions:

Height: 2 metre
Width: 1920mm
End Frame Depth: 500mm
Workbench Depth: 600mm

Parts List:

2 x End Frames	1 x Long Workbench Top
6 x Long Beams	2 x Four Drawer units
1 x Long Tool Display	2 x Shelves
(4 slats)	25 x Hooks

REDBACK UNIT 5B

This unit has all the features of a Unit 5A with the added lockable storage benefits of two maxi-drawers.

Dimensions:

Height: 2 metre
Width: 1920mm
End Frame Depth: 500mm
Workbench Depth: 600mm

Parts List:

2 x End Frames	1 x Long Workbench Top
6 x Long Beams	2 x Four Drawer units
1 x Long Tool Display	2 x Maxi-Drawers
(4 slats)	25 x Hooks



REDBACK UNIT 5C

Limited space? This unit has plenty of drawers plus a workbench and tool display.

Dimensions:

Height: 2 metre
Width: 990mm
End Frame Depth: 500mm
Workbench Depth: 600mm

Parts List:

2 x End Frames	1 x Short Workbench Top
6 x Short Beams	1 x Four Drawer unit
1 x Short Tool Display	1 x Maxi-Drawer
(4 slats)	10 x Hooks

REDBACK UNIT 5C WITH OVERHEAD

This unit has all the features of a Unit 5C with the added storage benefit of an overhead cabinet.

Dimensions:

Height: 2 metre
Width: 990mm
End Frame Depth: 500mm
Workbench Depth: 600mm

Parts List:

2 x End Frames	1 x Short Workbench Top
8 x Short Beams	1 x Four Drawer unit
1 x Overhead Cabinet	1 x Maxi-Drawer
1 x Short Tool Display	10 x Hooks
(2 slats)	



REDBACK WORKBENCHES

REDBACK UNIT 5B WITH OVERHEAD

This unit has all the features of a Unit 5B with the added storage benefit of two overhead cabinets.

Dimensions:

Height: 2 metre
Width: 1920mm
End Frame Depth: 500mm
Workbench Depth: 600mm

Parts List:

2 x End Frames	1 x Long Workbench Top
8 x Long Beams	2 x Four Drawer units
2 x Overhead Cabinets	2 x Maxi-Drawers
1 x Long Tool Display (2 slats)	25 x Hooks



REDBACK UNIT 5B DOUBLE

This unit has twice the storage of a standard Unit 5B with almost four metres of workbench space.

Dimensions:

Height: 2 metre
Width: 3810mm
End Frame Depth: 500mm
Workbench Depth: 600mm

Parts List:

2 x End Frames	2 x Long Workbench Tops
1 x Modified End Frame	4x Four Drawer units
12 x Long Beams	4 x Maxi-Drawers
2 x Long Tool Displays (4 slats)	50 x Hooks



REDBACK UNIT 7A

Plenty of storage here. Two 900mm lockable cabinets with two adjustable shelves, two four drawer lockable tool storage units, workbench top, tool display with 25 hooks and seven shelves engineered to hold 300kg each.

Dimensions:

Height: 2 metre
Width: 5695mm
End Frame Depth: 500mm
Workbench Depth: 600mm

Parts List:

4 x End Frames	1 x Long Workbench Top
20 x Long Beams	2x Four Drawer units
2 x 900mm Cabinets	14 x Shelves
1 x Long Tool Display (4 slats)	25 x Hooks

REDBACK UNIT 9

Four lockable 900mm cabinets for the maximum in secure storage for tools and equipment in your garage, workshop or factory.

Dimensions:

Height 2 metre
Width 1920mm
Depth 500mm

Parts List:

2 x End Frames
4 x Long Beams
4 x 900mm Cabinets



REDBACK UNIT 9A

This popular unit gives you two lockable cabinets plus two open shelves.

Dimensions:

Height 2 metre
Width 1920mm
Depth 500mm

Parts List:

2 x End Frames
6 x Long Beams
2 x 900mm Cabinets
4 x Shelves

REDBACK UNIT 10S

This unit is less than three metres long but has huge storage capacity. The Big-As cabinet sits in beams and has a shelf on top for extra storage. The cabinet and drawers are all lockable.

Dimensions:

Height 2 metre
Width 2880mm
End Frame Depth: 500mm
Workbench Depth: 600mm

Parts List:

3 x End Frames
6 x Long Beams
4 x Short Beams
1 x Big-As Cabinet
1 x Long Tool Display
(4 slats)

1 x Long Workbench Top
2 x Four Drawer units
3 x Shelves
25 x Hooks



REDBACK UNIT 10A OVERHEAD

This unit has the same features as a Unit 10S with added secure storage.

Dimensions:

Height 2 metre
Width 2880mm
End Frame Depth: 500mm
Workbench Depth: 600mm

Parts List:

3 x End Frames
8 x Long Beams
4 x Short Beams
1 x Big-As Cabinet
2 x Overhead Cabinets
1 x Long Tool Display
(2 slats)

1 x Long Workbench Top
2 x Four Drawer units
2 x Maxi-Drawers
1 x Shelf
25 x Hook



REDBACK UNIT 10A DOUBLE

This unit is almost six metres long with maximum secure storage and nearly four metres of workbench space.

Dimensions:

Height 2 metre
Width 5695mm
End Frame Depth: 500mm
Workbench Depth: 600mm

Parts List:

4 x End Frames
1 x Modified End Frame
12 x Long Beams
8 x Short Beams
2 x Big-As Cabinets

2 x Long Tool Displays
(4 slats)
2 x Long Workbench Tops
4 x Four Drawer units
4 x Maxi-Drawers
2 x Shelves
50 x Hooks



REDBACK UNIT 11

This unit is designed for maximum enclosed storage in the minimum space. The two Big-As cabinets sit in the beam recesses and each has a shelf on top for extra storage. If you need more storage, just add an extra bay.

Dimensions:

Height 2 metre
Width 1920mm
Depth 500mm

Parts List:

2 x End Frames
4 x Long Beams
2 x Big-As Cabinets
2 x Shelves

REDBACK UNIT 12

Needing less than four metres of wall space, Unit 12 will suit the handy person who wants to keep their workspace tidy. With two maxi-drawers for power tools, two four drawer units for smaller tools, a tool display for tools you need regularly and two Big-As cabinets for everything else, your workshop storage problems will be solved.

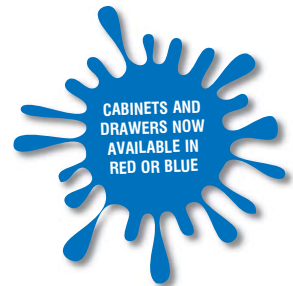
Dimensions:

Height 2 metre
Width 3840mm
End Frame Depth:
500mm
Workbench Depth:
600mm

Parts List:

4 x End Frames
6 x Long Beams
8 x Short Beams
2 x Big-As Cabinets
1 x Long Tool Display
(4 slats)

1 x Long Workbench
Top
2 x Four Drawer units
2 x Maxi-Drawers
2 x Shelves
25 x Hooks



REDBACK UNIT 13

Unit 13 is a dream come true. Just under six metres long, it will fit in most garages or workshops and has maximum secure storage for garden tools and chemicals, toys, power tools and spanners etc.

Dimensions:

Height 2 metre
Width 5695mm
End Frame Depth:
500mm
Workbench Depth:
600mm

Parts List:

4 x End Frames
14x Long Beams
4 x Big-As Cabinets
1 x Long Tool Display
(4 slats)

1 x Long Workbench Top
2 x Four Drawer units
2 x Maxi-Drawers
4 x Shelves
25 x Hooks



REDBACK UNIT 13 WITH OVERHEADS

This unit has the same features as a Unit 13 with even more lockable storage.

Dimensions:

Height 2 metre
Width 5695mm
End Frame Depth:
500mm
Workbench Depth:
600mm

Parts List:

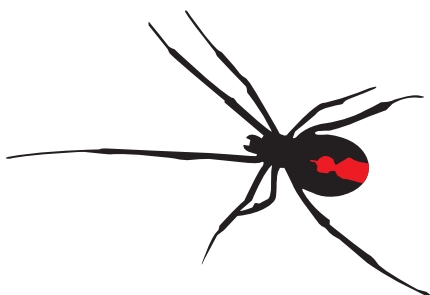
4 x End Frames
16 x Long Beams
4 x Big-As Cabinets
2 x Overhead Cabinets
1 x Long Tool Display
(2 slats)

1 x Long Workbench Top
2 x Four Drawer units
2 x Maxi-Drawers
4 x Shelves
25 x Hooks



Design your own dream workshop on our website...

www.redbackstoragesystems.com.au



REDBACK is available Australia wide through a web of friendly and helpful distributors...

New South Wales

Redback Storage Systems NSW Sydney
Phone Free Call: 1300 788 628
Email: info@redbackstoragesystems.com.au
Mobile: 0412 028 248 or 0415 868 899
Our Regional N.S.W display can be found at
Home Ideas - 17 Murray Dwyer Circuit,
Steel River Estate, Mayfield West
Newcastle NSW 2304

Queensland

Access Industrial Products Pty Ltd
36 Aquarium Avenue
Hemmant Qld 4174
redback@accessindustrial.com.au
Call us on (07) 3390 8199

South Australia

Redback Storage Systems SA
33 Parkers Road
Gawler Belt South Australia
redback@bthsecurity.com.au
Call Deb or Nick on (08) 8523 2690

Victoria

Redback Storage Systems
24 Allingham Street
Golden Square
Bendigo Victoria 3555
sales@redbackstoragesystems.com.au
Call Andrew on (03) 5442 6725

Western Australia

Redback Storage Systems WA
Unit 1 / 453 Yangebup Rd
Cockburn Central
Western Australia 6164
sales@redbackstoragewa.com.au
Call Rebecca on 0408 801 921



REDBACK
STORAGE SYSTEMS

WORKBENCHES, DRAWERS, CABINETS & SHELVES

Or Phone

Ph: 1300 788 628